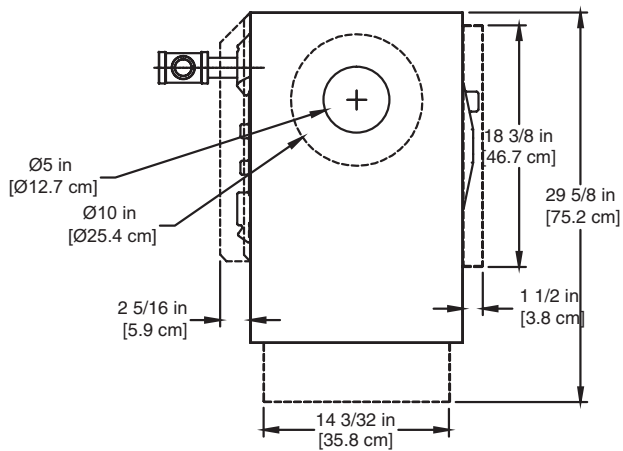


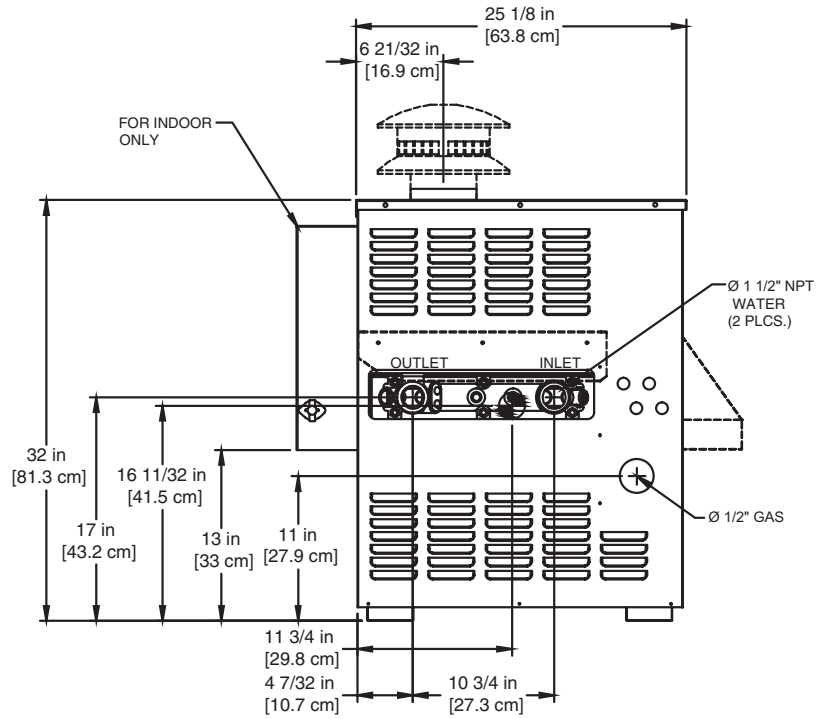
SPECTRUM 100

Category I Appliance

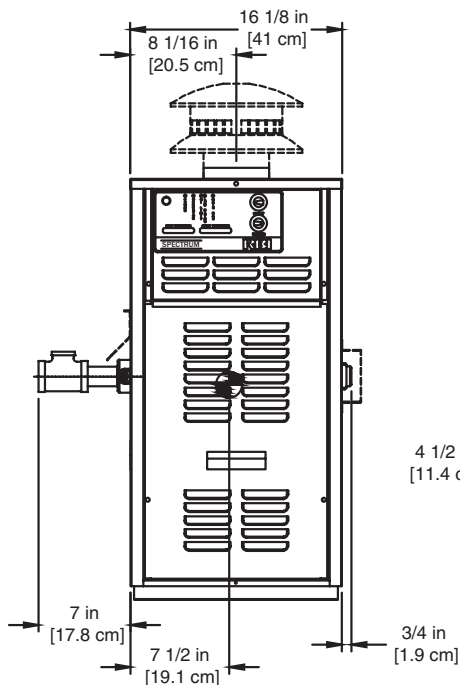
Must be vented into a negative pressure vent system.



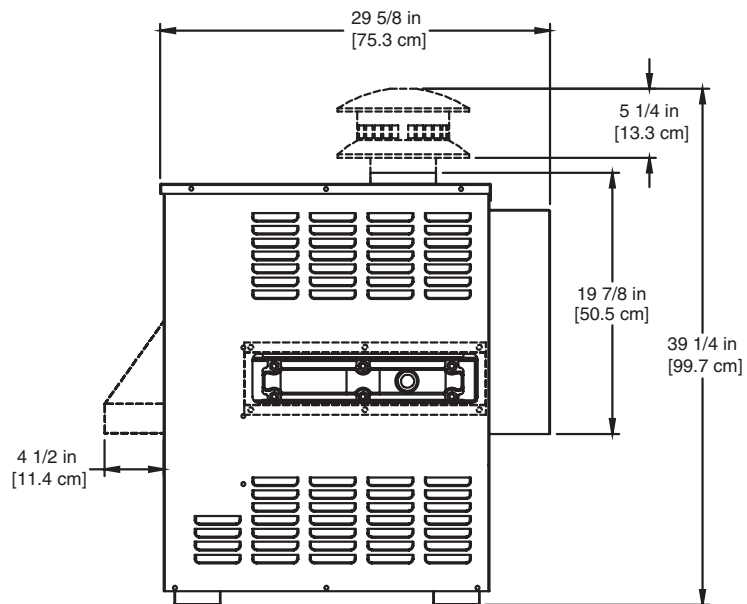
TOP



LEFT SIDE



FRONT



RIGHT SIDE

NOTE:
----- FOR OUTDOOR ONLY

RSUB-1-C

Spectrum 100 model boiler & water heater not available for sale in the U.S. market due to DOE regulations.
Spectrum 100 model water heater not available for sale in Canada.

Notes:

1. Dimensions are approximate and should not be used to "rough-in" equipment.
2. Dimensions are subject to change without notice.

BOILER CERTIFIED RATINGS & CAPACITIES

Fuel Type	Natural/Propane Gas	Boiler FLA	1*
Input BTU/hr.	100,000 / 29 kW	Min. Gas Pressure Required	5" WC**
Output BTU/hr.	82,000 / 24 kW	Max. Gas Pressure Allowed	14" WC
Electrical Requirements	120VAC / 1 ph / 60 hz	Operating Weight	164 lbs. / 74 kg.

BOILER / WATER HEATER TRIM & CONTROLS

Gas Valve - INT	Honeywell VR8304M 1/2"	Ignition Control (SB)	Honeywell S9361A2085
Gas Valve	Honeywell VR8304Q 3/4" - 2 Stg.	Ignition Control (SW)	Honeywell S86IOM
Operating Control (SB/SW)	Honeywell - On/Off	Relief Valve - SW	3/4" x 3/4" set @ 125 psi
Operating Control (SW)	Jumo - 2 Stage	Relief Valve - SB	3/4" x 3/4" set @ 30 psi
High Limit (SB/SW)	Jumo	Flow Switch	TACO

A.S.M.E.

ASME Sect IV Htg Surface	19.1 Sq. Ft. / 1.77 Sq. M.	Design Data	Max. 160 psig & 250°F
Water Volume	1.1 gal / 4.05 Liters		

* Add circulator amps.

** For incoming gas pressures lower than 5" WC natural or 11" WC propane, consult factory.

BOILER TEMPERATURE RISE / PRESSURE DROP

10°F / 5.5°C				
Flow Rate		Pressure Drop		
GPM	L/s	Ft	kPa	
16.4	1.0	0.05	0.1	2 Pass
16.4	1.0	0.34	1.0	4 Pass

WATER HEATER HOURLY RECOVERY CAPACITY (GPH & LPH)

40°F	22°C	60°F	33°C	80°F	44°C	100°F	56°C	120°F	67°C	140°F	78°C
240	908	160	605	120	454	96	363	80	303	69	259

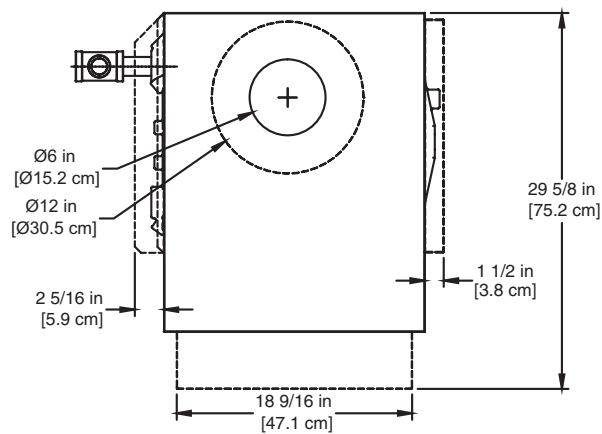
Spectrum 100 model boiler & water heater not available for sale in the U.S. market due to DOE regulations.
Spectrum 100 model water heater not available for sale in Canada.

REP FIRM _____ SUBMITTED BY _____ JOB NAME _____ ARCHITECT _____ ENGINEER _____ CONTRACTOR _____ DATE _____	<div style="background-color: black; color: white; padding: 10px; text-align: center;"> <h1 style="margin: 0;">SPECTRUM 100</h1> </div> <p style="text-align: center;">Category I Appliance</p> <p style="text-align: center;">Must be vented into a negative pressure vent system.</p> <div style="display: flex; align-items: center; justify-content: center;">  <div style="margin-left: 20px;"> <p>A Division of Mestek, Inc. Westfield, MA 01085 (413) 568-9571</p> </div> </div> <p style="font-size: small; text-align: center;">RELIABLE. BOLD. INNOVATIVE.</p>
--	---

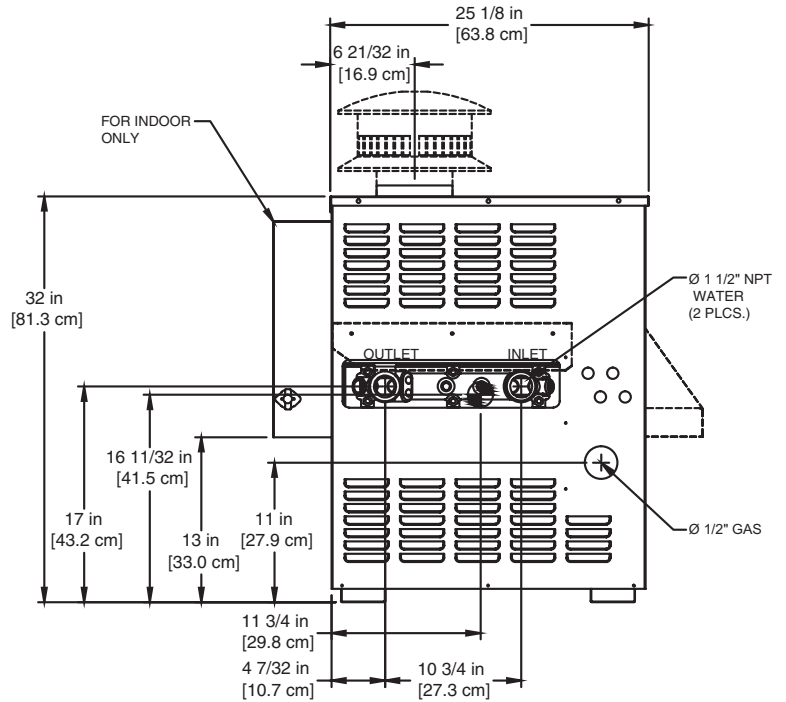
SPECTRUM 150

Category I Appliance

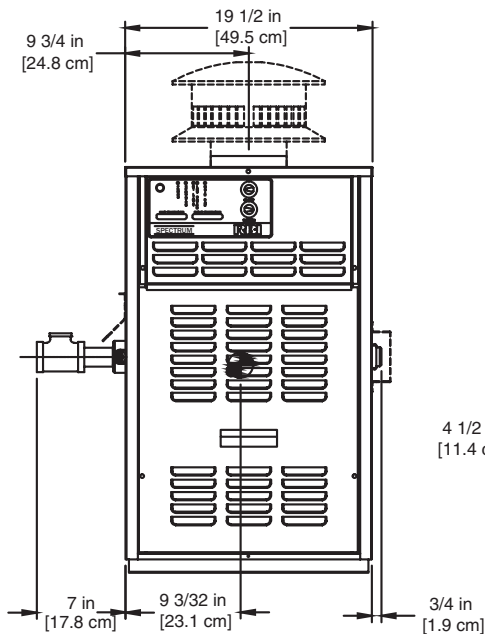
Must be vented into a negative pressure vent system.



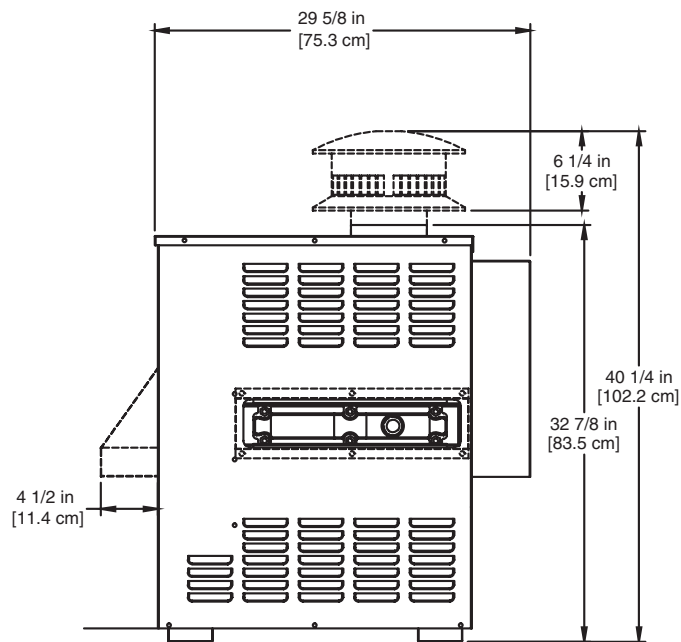
TOP



LEFT SIDE



FRONT



RIGHT SIDE

NOTE:

----- FOR OUTDOOR ONLY

RSUB-2-C

Notes:

1. Dimensions are approximate and should not be used to "rough-in" equipment.
2. Dimensions are subject to change without notice.

Spectrum 150 model boiler & water heater not available for sale in the U.S. market due to DOE regulations.

Spectrum 150 model water heater not available for sale in Canada.

SSPEC-150-7

BOILER CERTIFIED RATINGS & CAPACITIES

Fuel Type	Natural/Propane Gas	Boiler FLA	1*
Input BTU/hr.	150,000 / 44 kW	Min. Gas Pressure Required	5" WC**
Output BTU/hr.	123,000 / 36 kW	Max. Gas Pressure Allowed	14" WC
Electrical Requirements	120VAC / 1 ph / 60 hz	Operating Weight	171 lbs. / 78 kg.

BOILER / WATER HEATER TRIM & CONTROLS

Gas Valve - INT	Honeywell VR8304M 1/2"	Ignition Control (SB)	Honeywell S9361A2085
Gas Valve	Honeywell VR8304Q 3/4" - 2 Stg.	Ignition Control (SW)	Honeywell S86IOM
Operating Control (SB/SW)	Honeywell - On/Off	Relief Valve - SW	3/4" x 3/4" set @ 125 psi
Operating Control (SW)	Jumo - 2 Stage	Relief Valve - SB	3/4" x 3/4" set @ 30 psi
High Limit (SB/SW)	Honeywell	Flow Switch	TACO

A.S.M.E.

ASME Sect IV Htg Surface	25.0 Sq. Ft. / 2.32 Sq. M.	Design Data	Max. 160 psig & 250°F
Water Volume	1.1 gal / 4.32 Liters		

* Add circulator amps.

** For incoming gas pressures lower than 5" WC natural or 11" WC propane, consult factory.

BOILER TEMPERATURE RISE / PRESSURE DROP

10°F / 5.5°C				
Flow Rate		Pressure Drop		
GPM	L/s	Ft	kPa	
24.6	1.6	0.13	0.4	2 Pass
24.6	1.6	0.94	2.8	

WATER HEATER HOURLY RECOVERY CAPACITY (GPH & LPH)

40°F	22°C	60°F	33°C	80°F	44°C	100°F	56°C	120°F	67°C	140°F	78°C
360	1361	240	908	180	681	144	545	120	454	103	389

Spectrum 150 model boiler & water heater not available for sale in the U.S. market due to DOE regulations.
Spectrum 150 model water heater not available for sale in Canada.

REP FIRM	_____
SUBMITTED BY	_____
JOB NAME	_____
ARCHITECT	_____
ENGINEER	_____
CONTRACTOR	_____
DATE	_____

SPECTRUM 150

Category I Appliance

Must be vented into a negative pressure vent system.

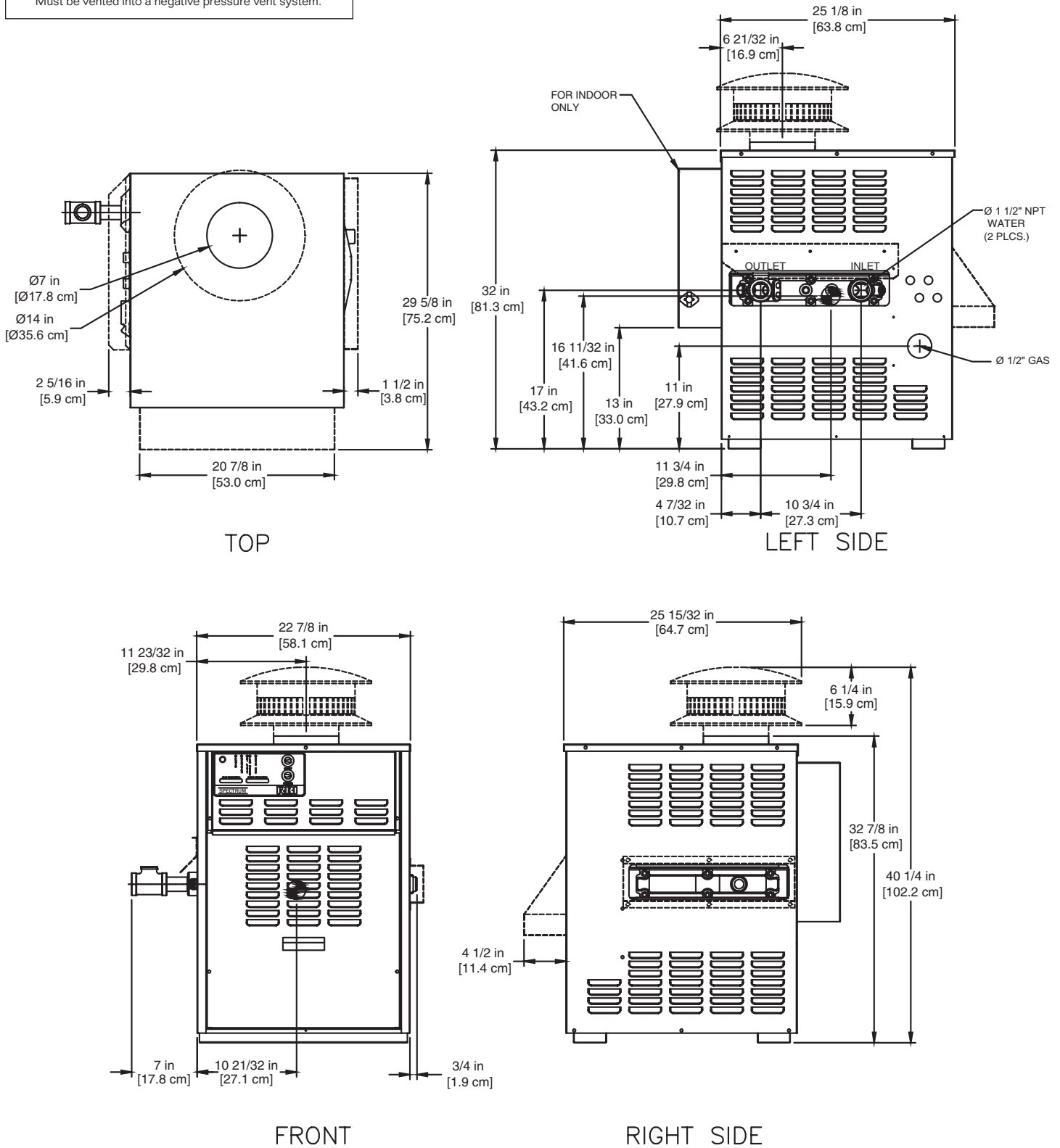


A Division of Mestek, Inc.
 Westfield, MA 01085
 (413) 568-9571

SPECTRUM 200

Category I Appliance

Must be vented into a negative pressure vent system.



NOTE:

----- FOR OUTDOOR ONLY

RSUB-3-C

Notes:

1. Dimensions are approximate and should not be used to "rough-in" equipment.
2. Dimensions are subject to change without notice.

Spectrum 200 model boiler & water heater not available for sale in the U.S. market due to DOE regulations.
Spectrum 200 model water heater not available for sale in Canada.

SSPEC-200-7

BOILER CERTIFIED RATINGS & CAPACITIES

Fuel Type	Natural/Propane Gas	Boiler FLA	1*
Input BTU/hr.	199,000 / 58 kW	Min. Gas Pressure Required	5" WC**
Output BTU/hr.	163,180 / 49 kW	Max. Gas Pressure Allowed	14" WC
Electrical Requirements	120VAC / 1 ph / 60 hz	Operating Weight	202 lbs. / 92 kg.

BOILER / WATER HEATER TRIM & CONTROLS

Gas Valve - INT	Honeywell VR8304M 1/2"	Ignition Control (SB)	Honeywell S9361A2085
Gas Valve	Honeywell VR8304Q 3/4" - 2 Stg.	Ignition Control (SW)	Honeywell S86IOM
Operating Control (SB/SW)	Honeywell - On/Off	Relief Valve - SW	3/4" x 3/4" set @ 125 psi
Operating Control (SW)	Jumo - 2 Stage	Relief Valve - SB	3/4" x 3/4" set @ 30 psi
High Limit (SB/SW)	Honeywell	Flow Switch	TACO

A.S.M.E.

ASME Sect IV Htg Surface	30.8 Sq. Ft. / 2.86 Sq. M.	Design Data	Max. 160 psig & 250°F
Water Volume	1.2 gal / 4.58 Liters		

* Add circulator amps.

** For incoming gas pressures lower than 5" WC natural or 11" WC propane, consult factory.

BOILER TEMPERATURE RISE / PRESSURE DROP

10°F / 5.5°C				20°F / 11.1°C				
Flow Rate		Pressure Drop		Flow Rate		Pressure Drop		
GPM	L/s	Ft	kPa	GPM	L/s	Ft	kPa	
32.6	2.1	0.27	0.8	16.3	1.0	0.07	0.2	2 Pass
32.6	2.1	1.95	5.7	16.3	1.0	0.54	1.6	4 Pass

WATER HEATER HOURLY RECOVERY CAPACITY (GPH & LPH)

40°F	22°C	60°F	33°C	80°F	44°C	100°F	56°C	120°F	67°C	140°F	78°C
480	1815	320	1210	240	908	192	726	160	605	137	519

Spectrum 200 model boiler & water heater not available for sale in the U.S. market due to DOE regulations.
Spectrum 200 model water heater not available for sale in Canada.

REP FIRM	_____
SUBMITTED BY	_____
JOB NAME	_____
ARCHITECT	_____
ENGINEER	_____
CONTRACTOR	_____
DATE	_____

SPECTRUM 200

Category I Appliance

Must be vented into a negative pressure vent system.

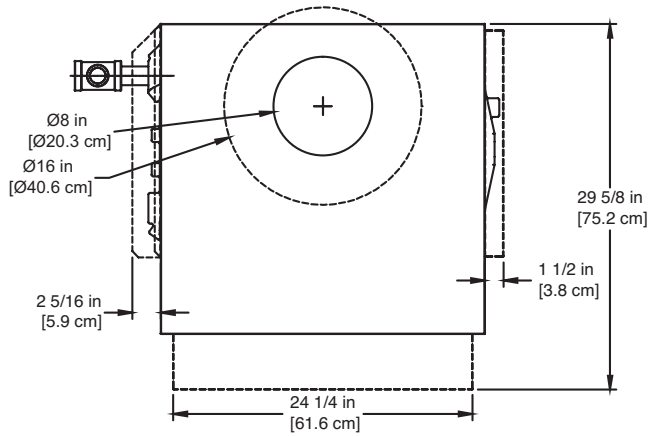


A Division of Mestek, Inc.
 Westfield, MA 01085
 (413) 568-9571

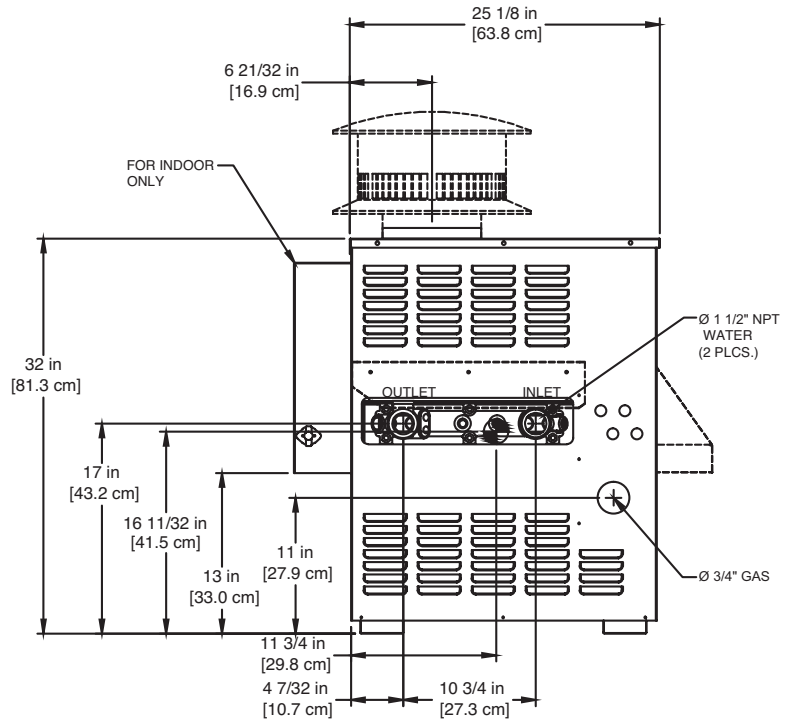
SPECTRUM 250

Category I Appliance

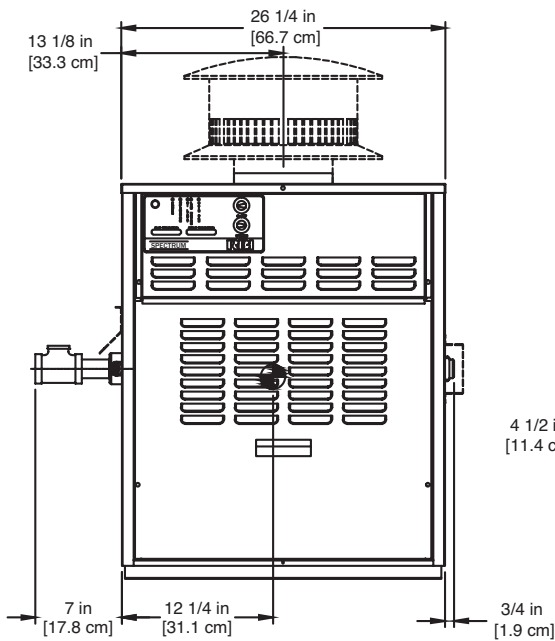
Must be vented into a negative pressure vent system.



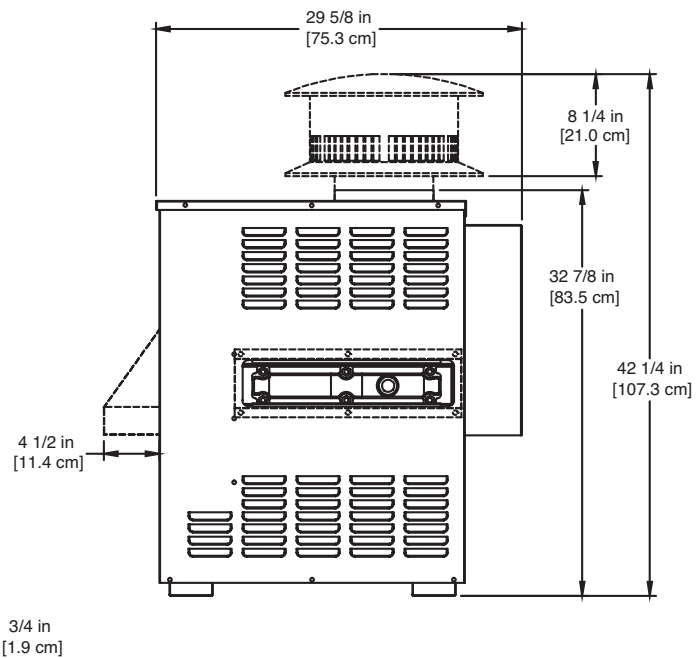
TOP



LEFT SIDE



FRONT



RIGHT SIDE

NOTE:

----- FOR OUTDOOR ONLY

RSUB-4-C

Notes:

1. Dimensions are approximate and should not be used to "rough-in" equipment.
2. Dimensions are subject to change without notice.

Spectrum 250 model boiler not available for sale in the U.S. market due to DOE regulations.

SSPEC-250-7

BOILER CERTIFIED RATINGS & CAPACITIES

Fuel Type	Natural/Propane Gas	Boiler FLA	1*
Input BTU/hr.	250,000 / 73 kW	Min. Gas Pressure Required	5" WC**
Output BTU/hr.	205,000 / 60 kW	Max. Gas Pressure Allowed	14" WC
Electrical Requirements	120VAC / 1 ph / 60 hz	Operating Weight	218 lbs. / 99 kg.

BOILER / WATER HEATER TRIM & CONTROLS

Gas Valve - INT	Honeywell VR8304M 3/4"	Ignition Control (SB)	Honeywell S9361A2085
Gas Valve	Honeywell VR8304Q 3/4" - 2 Stg.	Ignition Control (SW)	Honeywell S86IOM
Operating Control (SB/SW)	Honeywell - On/Off	Relief Valve - SW	3/4" x 3/4" set @ 125 psi
Operating Control (SW)	Jumo - 2 Stage	Relief Valve - SB	3/4" x 3/4" set @ 30 psi
High Limit (SB/SW)	Jumo	Flow Switch	TACO

A.S.M.E.

ASME Sect IV Htg Surface	36.7 Sq. Ft. / 3.41 Sq. M.	Design Data	Max. 160 psig & 250°F
Water Volume	1.3 gal / 4.85 Liters		

* Add circulator amps.

** For incoming gas pressures lower than 5" WC natural or 11" WC propane, consult factory.

BOILER TEMPERATURE RISE / PRESSURE DROP

10°F / 5.5°C				20°F / 11.1°C				
Flow Rate		Pressure Drop		Flow Rate		Pressure Drop		
GPM	L/s	Ft	kPa	GPM	L/s	Ft	kPa	
41.0	2.6	0.49	1.4	20.5	1.3	0.14	0.4	2 Pass
41.0	2.6	3.54	10.4	20.5	1.3	0.98	2.9	4 Pass

WATER HEATER HOURLY RECOVERY CAPACITY (GPH & LPH)

40°F	22°C	60°F	33°C	80°F	44°C	100°F	56°C	120°F	67°C	140°F	78°C
600	2269	400	1513	300	1134	240	908	200	756	171	648

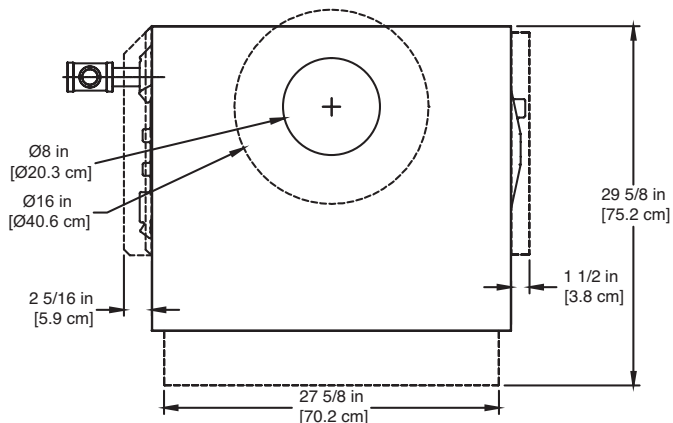
Spectrum 250 model boiler not available for sale in the U.S. market due to DOE regulations.

REP FIRM _____ SUBMITTED BY _____ JOB NAME _____ ARCHITECT _____ ENGINEER _____ CONTRACTOR _____ DATE _____	<div> SPECTRUM 250 Category I Appliance Must be vented into a negative pressure vent system. </div> <div>  RELIABLE. BOLD. INNOVATIVE. </div> <div> A Division of Mestek, Inc. Westfield, MA 01085 (413) 568-9571 </div>
--	---

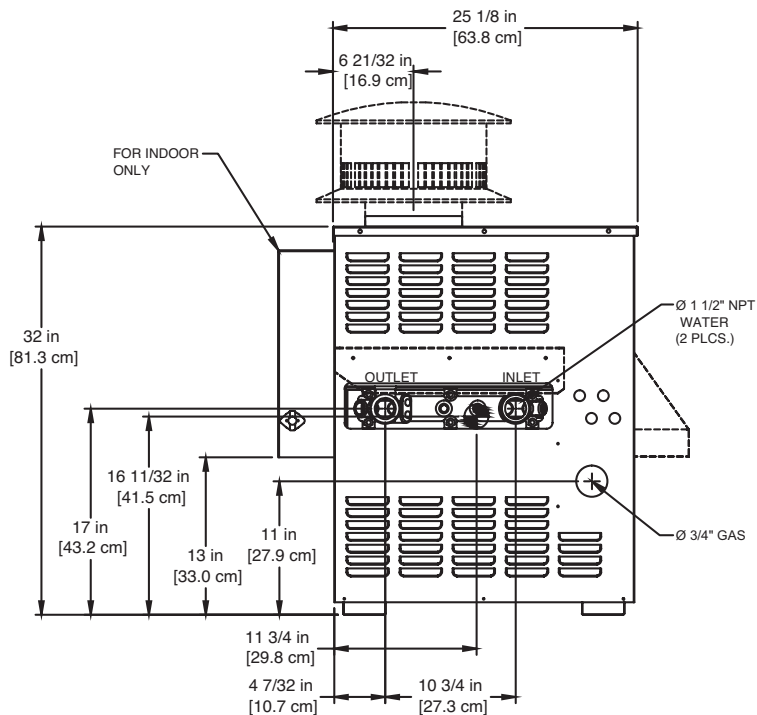
SPECTRUM 300

Category I Appliance
Must be vented into a negative pressure vent system.

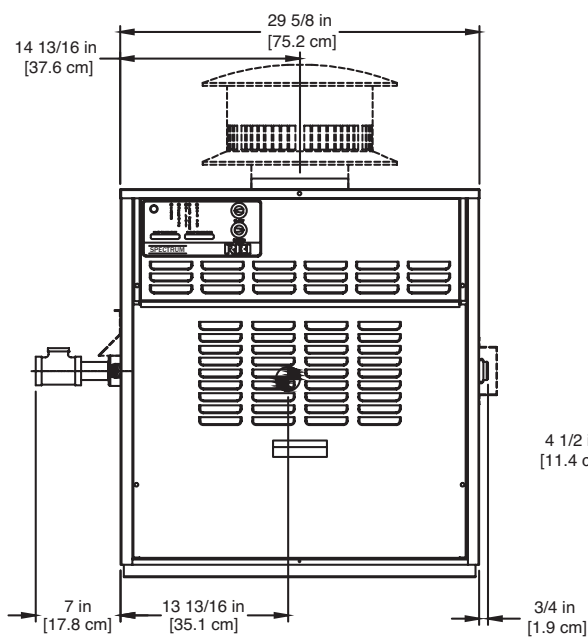
Must be vented into a negative pressure vent system.



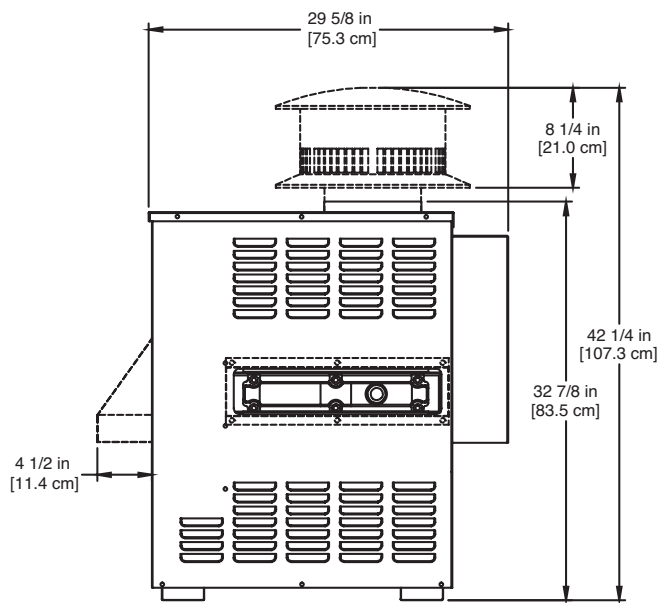
TOP



LEFT SIDE



FRONT



RIGHT SIDE

NOTE:

----- FOR OUTDOOR
ONLY

RSUB-5-C

Notes:

- Notes:
1. Dimensions are approximate and should not be used to "rough-in" equipment.
 2. Dimensions are subject to change without notice.

BOILER CERTIFIED RATINGS & CAPACITIES

Fuel Type	Natural/Propane Gas	Boiler FLA	1*
Input BTU/hr.	301,000 / 88 kW	Min. Gas Pressure Required	5" WC**
Output BTU/hr.	246,820 / 72 kW	Max. Gas Pressure Allowed	14" WC
Electrical Requirements	120VAC / 1 ph / 60 hz	Operating Weight	232 lbs. / 105 kg.

BOILER / WATER HEATER TRIM & CONTROLS

Gas Valve - INT	Honeywell VR8304M 3/4"	Ignition Control (SB On/Off)	Honeywell S9361A2085
Gas Valve	Honeywell VR8304Q 3/4" - 2 Stg.	Ignition Control (SB 2 Stg.)	Honeywell S86IOM
Operating Control (SB/SW)	Honeywell - On/Off	Ignition Control (SW)	Honeywell S86IOM
Operating Control (SB)	Jumo - 2 Stage	Relief Valve - SW	3/4" x 3/4" set @ 125 psi
High Limit (SB/SW)	Jumo	Relief Valve - SB	3/4" x 3/4" set @ 30 psi
		Flow Switch	TACO

A.S.M.E.

ASME Sect IV Htg Surface	42.5 Sq. Ft. / 3.95 Sq. M.	Design Data	Max. 160 psig & 250°F
Water Volume	1.4 gal / 5.11 Liters		

* Add circulator amps.

** For incoming gas pressures lower than 5" WC natural or 11" WC propane, consult factory.

BOILER TEMPERATURE RISE / PRESSURE DROP

10°F / 5.5°C				20°F / 11.1°C				30°F / 16.7°C				2 Pass 4 Pass
Flow Rate		Pressure Drop		Flow Rate		Pressure Drop		Flow Rate		Pressure Drop		
GPM	L/s	Ft	kPa	GPM	L/s	Ft	kPa	GPM	L/s	Ft	kPa	
49.4	3.1	0.80	2.4	24.7	1.6	0.22	0.7	16.5	1.0	0.10	0.3	
49.4†	3.1†	5.79	17.1	24.7	1.6	1.60	4.7	16.5	1.0	0.80	2.2	

† Flow exceeds recommended maximum use a greater temperature rise or consult manufacturer.
Cupronickel heat exchanger should be considered.

WATER HEATER HOURLY RECOVERY CAPACITY (GPH & LPH)

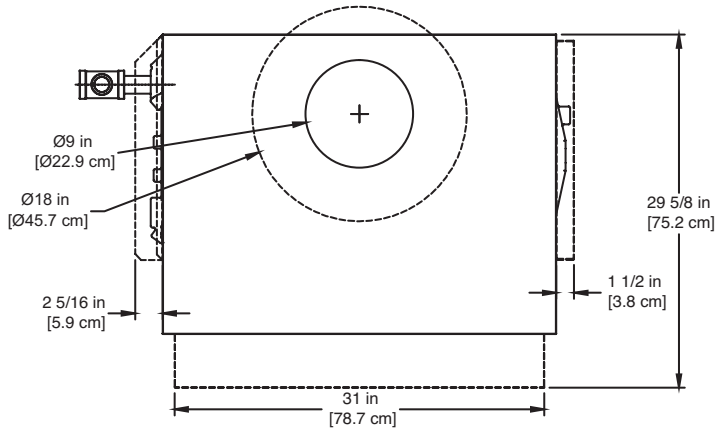
40°F	22°C	60°F	33°C	80°F	44°C	100°F	56°C	120°F	67°C	140°F	78°C
720	2723	480	1815	360	1361	288	1089	240	908	206	778

REP FIRM	_____	<h1>SPECTRUM 300</h1> <p>Category I Appliance</p> <p>Must be vented into a negative pressure vent system.</p> <div>  <p>RBI® A Division of Mestek, Inc. Westfield, MA 01085 (413) 568-9571</p> </div> <p>RELIABLE. BOLD. INNOVATIVE.</p>
SUBMITTED BY	_____	
JOB NAME	_____	
ARCHITECT	_____	
ENGINEER	_____	
CONTRACTOR	_____	
DATE	_____	

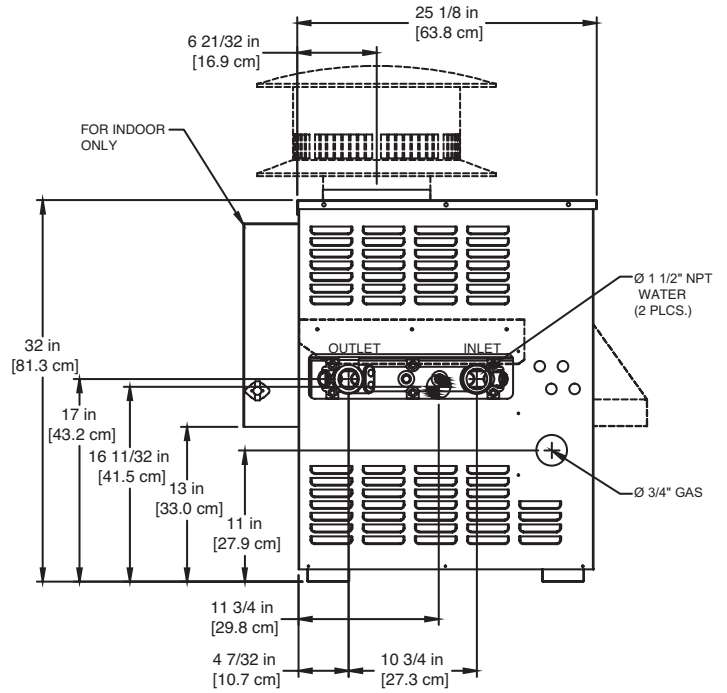
SPECTRUM 350

Category I Appliance

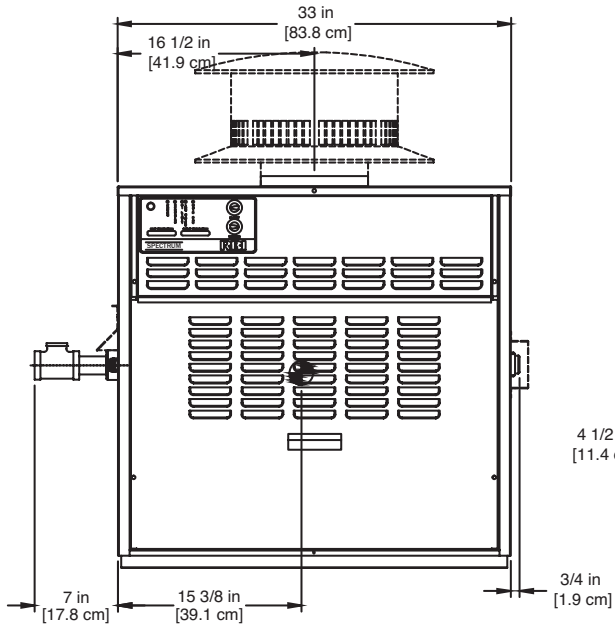
Must be vented into a negative pressure vent system.



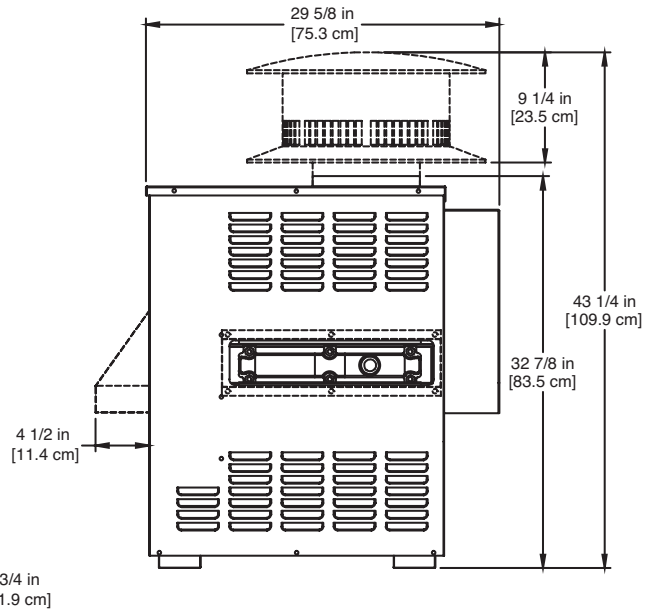
TOP



LEFT SIDE



FRONT



RIGHT SIDE

NOTE:

----- FOR OUTDOOR
ONLY

RSUB-6-C

Notes:

1. Dimensions are approximate and should not be used to "rough-in" equipment.
2. Dimensions are subject to change without notice.

BOILER CERTIFIED RATINGS & CAPACITIES

Fuel Type	Natural/Propane Gas	Boiler FLA	1*
Input BTU/hr.	350,000 / 103 kW	Min. Gas Pressure Required	5" WC**
Output BTU/hr.	285,600 / 84 kW	Max. Gas Pressure Allowed	14" WC
Electrical Requirements	120VAC / 1 ph / 60 hz	Operating Weight	252 lbs. / 114 kg.

BOILER / WATER HEATER TRIM & CONTROLS

Gas Valve - INT	Honeywell VR8304M 3/4"	Ignition Control (SB On/Off)	Honeywell S9361A2085
Gas Valve	Honeywell VR8304Q 3/4" - 2 Stg.	Ignition Control (SB 2 Stg.)	Honeywell S86IOM
Operating Control (SB/SW)	Honeywell - On/Off	Ignition Control (SW)	Honeywell S86IOM
Gas Valve	Honeywell VR8304Q 3/4" - 2 Stg.	Relief Valve - SW	3/4" x 3/4" set @ 125 psi
High Limit (SB/SW)	Jumo	Relief Valve - SB	3/4" x 3/4" set @ 30 psi
		Flow Switch	TACO

A.S.M.E.

ASME Sect IV Htg Surface	48.5 Sq. Ft. / 4.50 Sq. M.	Design Data	Max. 160 psig & 250°F
Water Volume	1.4 gal / 5.38 Liters		

* Add circulator amps.

** For incoming gas pressures lower than 5" WC natural or 11" WC propane, consult factory.

BOILER TEMPERATURE RISE / PRESSURE DROP

10°F / 5.5°C				20°F / 11.1°C				30°F / 16.7°C				2 Pass 4 Pass
Flow Rate		Pressure Drop		Flow Rate		Pressure Drop		Flow Rate		Pressure Drop		
GPM	L/s	Ft	kPa	GPM	L/s	Ft	kPa	GPM	L/s	Ft	kPa	
57.1	3.6	1.20	3.5	28.6	1.8	0.33	1.0	19.0	1.2	0.20	0.5	
-	-	-	-	28.6	1.8	2.39	7.0	19.0	1.2	1.10	3.3	

WATER HEATER HOURLY RECOVERY CAPACITY (GPH & LPH)

40°F	22°C	60°F	33°C	80°F	44°C	100°F	56°C	120°F	67°C	140°F	78°C
840	3176	560	2118	420	1588	336	1271	280	1059	240	908

REP FIRM _____
SUBMITTED BY _____
JOB NAME _____
ARCHITECT _____
ENGINEER _____
CONTRACTOR _____
DATE _____

SPECTRUM 350

Category I Appliance

Must be vented into a negative pressure vent system.

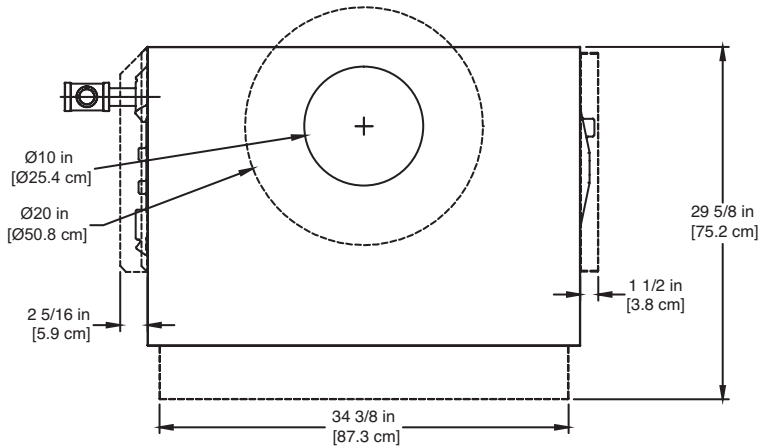


A Division of Mestek, Inc.
 Westfield, MA 01085
 (413) 568-9571

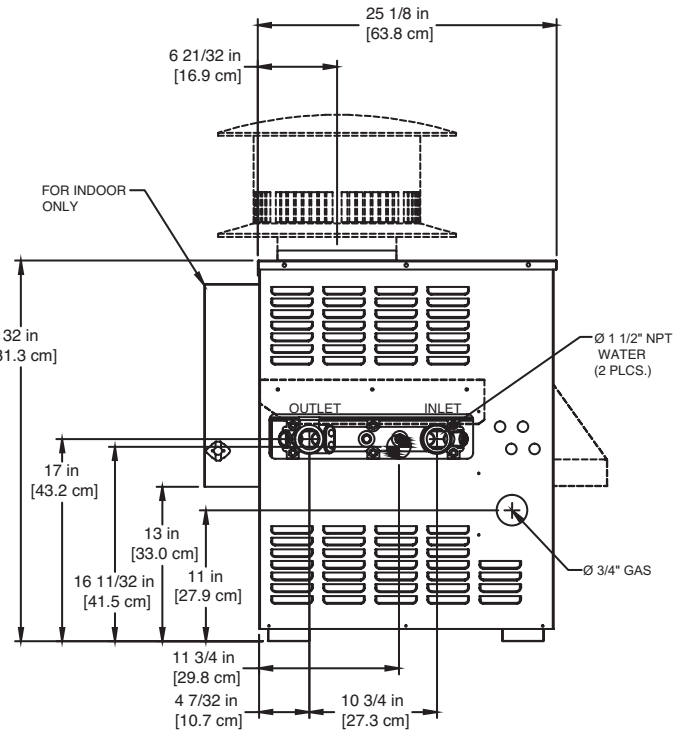
SPECTRUM 400

Category I Appliance

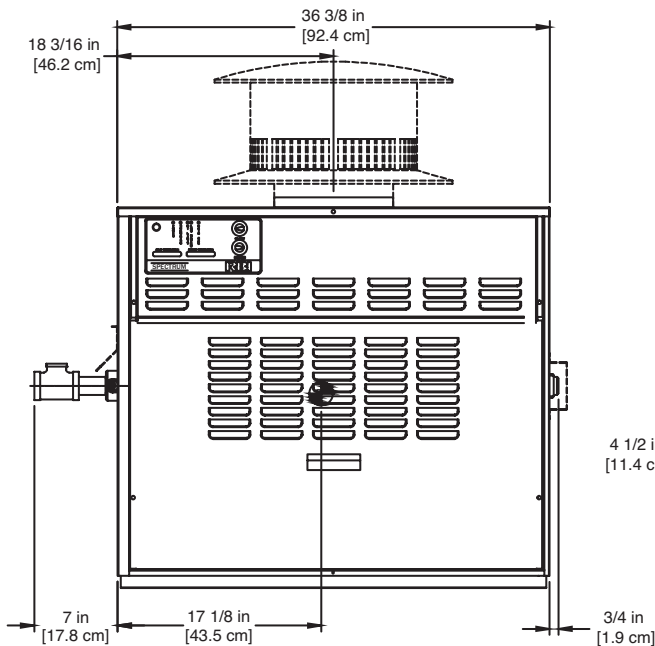
Must be vented into a negative pressure vent system.



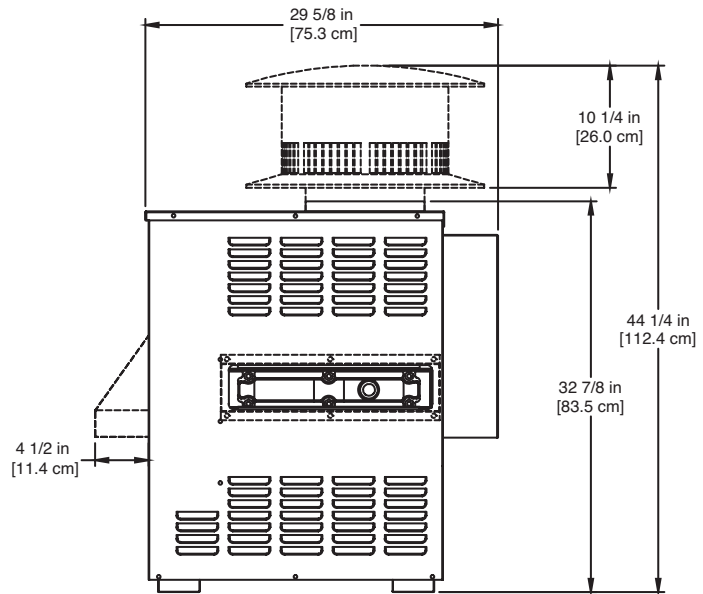
TOP



LEFT SIDE



FRONT



RIGHT SIDE

NOTE:

----- FOR OUTDOOR ONLY

RSUB-7-C

Notes:

1. Dimensions are approximate and should not be used to "rough-in" equipment.
2. Dimensions are subject to change without notice.

BOILER CERTIFIED RATINGS & CAPACITIES

Fuel Type	Natural/Propane Gas	Boiler FLA	1*
Input BTU/hr.	399,000 / 117 kW	Min. Gas Pressure Required	5" WC**
Output BTU/hr.	323,988 / 95 kW	Max. Gas Pressure Allowed	14" WC
Electrical Requirements	120VAC / 1 ph / 60 hz	Operating Weight	264 lbs. / 120 kg.

BOILER / WATER HEATER TRIM & CONTROLS

Gas Valve - INT	Honeywell VR8304M 3/4"	Ignition Control (SB On/Off)	Honeywell S9361A2085
Gas Valve	Honeywell VR8304Q 3/4" - 2 Stg	Ignition Control (SB 2 Stg.)	Honeywell S86IOM
Gas Valve	Honeywell VR8304Q 3/4" - 2 Stg.	Ignition Control (SW)	Honeywell S86IOM
Operating Control (SB)	Jumo - 2 Stage	Relief Valve - SW	3/4" x 3/4" set @ 125 psi
High Limit (SB/SW)	Jumo	Relief Valve - SB	3/4" x 3/4" set @ 30 psi
		Flow Switch	TACO

A.S.M.E.

ASME Sect IV Htg Surface	54.3 Sq. Ft. / 5.04 Sq. M.	Design Data	Max. 160 psig & 250°F
Water Volume	1.5 gal / 5.64 Liters		

* Add circulator amps.

** For incoming gas pressures lower than 5" WC natural or 11" WC propane, consult factory.

BOILER TEMPERATURE RISE / PRESSURE DROP

10°F / 5.5°C				20°F / 11.1°C				30°F / 16.7°C				2 Pass 4 Pass
Flow Rate		Pressure Drop		Flow Rate		Pressure Drop		Flow Rate		Pressure Drop		
GPM	L/s	Ft	kPa	GPM	L/s	Ft	kPa	GPM	L/s	Ft	kPa	
64.8	4.1	1.69	5.0	32.4	2.0	0.47	1.4	21.6	1.4	0.20	0.7	
-	-	-	-	32.4	2.0	3.40	10.0	21.6	1.4	1.60	4.7	

WATER HEATER HOURLY RECOVERY CAPACITY (GPH & LPH)

40°F	22°C	60°F	33°C	80°F	44°C	100°F	56°C	120°F	67°C	140°F	78°C
960	3630	640	2420	480	1815	384	1452	320	1210	274	1037

REP FIRM _____
SUBMITTED BY _____
JOB NAME _____
ARCHITECT _____
ENGINEER _____
CONTRACTOR _____
DATE _____

SPECTRUM 400

Category I Appliance

Must be vented into a negative pressure vent system.



A Division of Mestek, Inc.
 Westfield, MA 01085
 (413) 568-9571